



# Nintex® Live



## Take Control of Your Cloud with AWS & Nintex Live

Whether your organization is just beginning to consider cloud computing or it already has committed resources in the cloud, it's likely to be touching Amazon Web Services (AWS). As one of the largest providers of reliable, scalable, low-cost infrastructure platforms in the cloud, AWS powers hundreds of thousands of customers with datacenters around the world.

By adding structured processes to your cloud services, you multiply efficiencies and deliver even faster ROI to your organization. With Nintex Live actions, you can now integrate AWS scenarios into your Nintex Workflows to:

- Speed time to productivity by provisioning virtual machines in onboarding workflows
- Improve your cloud asset accountability by adding process to your virtual machine requests
- Manage your cloud costs by automating the power states of your virtual machines.

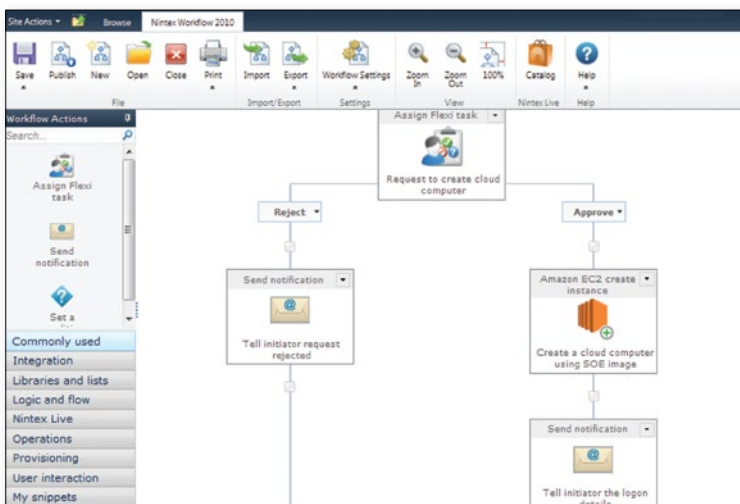


Start your free trial by visiting [nintex.com/live](http://nintex.com/live)

## EXTEND ONBOARDING WORKFLOWS TO THE CLOUD

Create virtual machines by building Nintex Live AWS actions into your standard onboarding workflow. By extending your provisioning processes, your new employees can be productive faster.

You can also streamline HR and IT processes by using Nintex Live actions to automate the decommissioning of employee virtual machines.



## IMPROVE YOUR CLOUD ASSET ACCOUNTABILITY

To get the most value from AWS, IT managers need to know more about how your company uses cloud services, which departments are using it, how often are they using it, and how much are they using each time.

By building workflows with Nintex Live AWS actions and Nintex Forms, you can account for your cloud assets more effectively by feeding important request and usage information directly into SharePoint for better visibility and analysis.

## MANAGE YOUR CLOUD COSTS

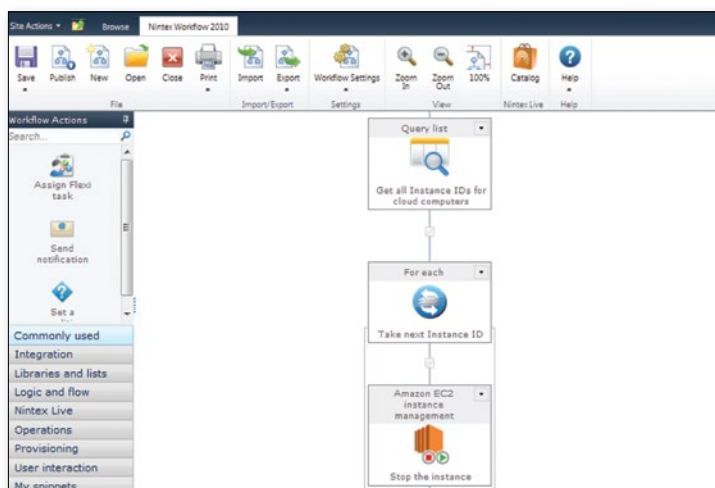
Your organization wants to take full advantage of the cost savings in cloud computing. Nintex Live helps you do this by automating start and stop times of your virtual machines.

Workflows with Nintex Live AWS actions help you automate processes to ensure that you are only paying for AWS assets when you actually need them – spin machines up before employees start, shut them down after they leave, and optimize your IT budget.

**Activate Nintex Live and extend your Nintex Workflows and Nintex Forms to the cloud.**

**Visit [connect.nintex.com](http://connect.nintex.com) to learn how to activate Nintex Live today!**

**To see the full range of cloud services you can use to enhance your workflows, visit [www.nintex.com/live](http://www.nintex.com/live).**



**START YOUR FREE TRIAL BY VISITING [NINTEX.COM/LIVE](http://NINTEX.COM/LIVE)**